

HONK SET & LARGE PROPS

Hundreds of hours have gone into the building of this set and it will enhance any production.



We have a wooden nest, eight feet in diameter and two feet high, with a ramp approximately two feet wide and four feet long. The top of the nest has five small trap doors to allow the ducklings to emerge from beneath each eggshell. Each eggshell is made of fiberglass and all five eggshells are shown below. The largest (#5) is over 3' in length, approx. 2' wide and about 18" high. The other four are slightly smaller :

Eggshell Numbers:

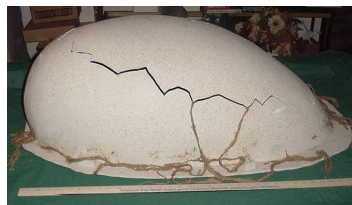
1



2



3



4



5



The Eggshells and nest are available for renting for a very reasonable fee. Also included are the cattails and islands for mounting them independent of the nest and a stewing pot and giant wooden spoon and meat cleaver. Pictures of these items are on the next page.

HONK SET & LARGE PROPS (Continued)

We have two cattail islands. Pictured below are how we used them for various scenes.



We used the cattails in a variety of set-ups to depict the various scenes in the show. Two different backdrops were used for the two productions of “HONK!” depicted above. They were used to depict the barnyard. When they were covered with the back black teaser, the cattails and nest (sans eggshells) were used to depict the marsh, the pond and other locations along the way. The stewing pot, giant wooden spoon and meat cleaver (shown below) were all used in the “Play With Your Food” scene.



All items were built for our production of HONK! that was performed in Waterford, MI in May 2003 (Renter to arrange their own transport).

If you are interested in more information or would like to view the various set pieces, contact us at 248-988-0098 OR e-mail us at: webmaster@lakelandplayers.net